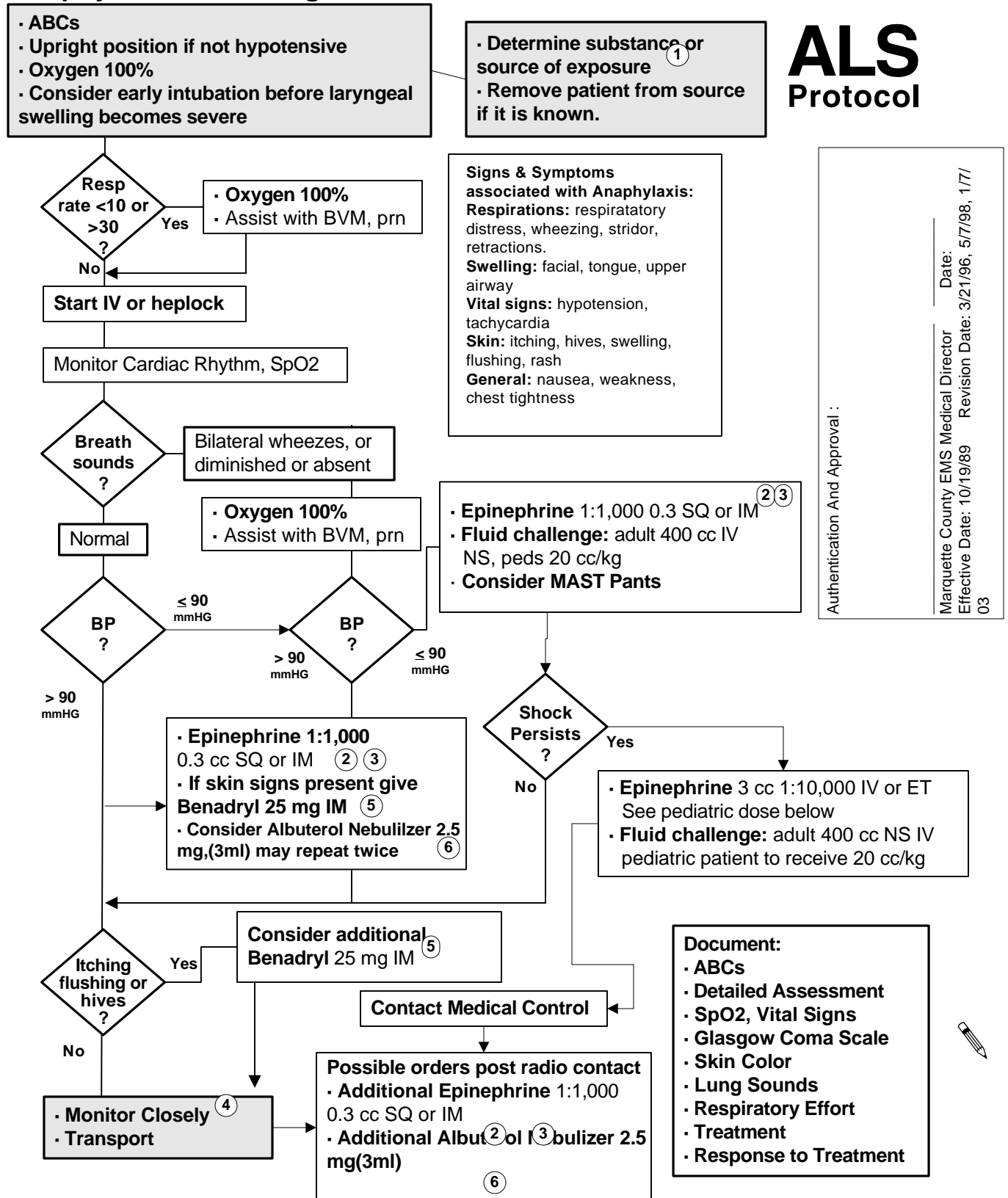


Marquette County EMS Medical Control Authority

Anaphylaxis and Allergic Reaction Protocol

Part 1 Section 1

ALS Protocol



- 1 Bee sting: gently remove stinger if still present.
- 2 Two (2) dilution's of epinephrine are available: 1:1,000 is appropriate for SQ, IM, or SL injections, 1:10,000 is for IV or ET use. Be sure to give the appropriate dilution.
- 3 Epinephrine: pediatric dose = 0.01 mg/kg 1:1,000 SQ or 0.01 mg/kg 1:20,000 IV, ET
- 4 Contact Medical Control if symptoms/signs persist.
- 5 Benadryl (Diphenhydramine): pediatric dose = 1-2 mg/kg IM or slow IV.
- 6 Albuterol: pediatric dose 5 years old and under: 1.25 mg Albuterol in 1.5+ ml saline to bring total fluid up to 3 ml in nebulizer.