

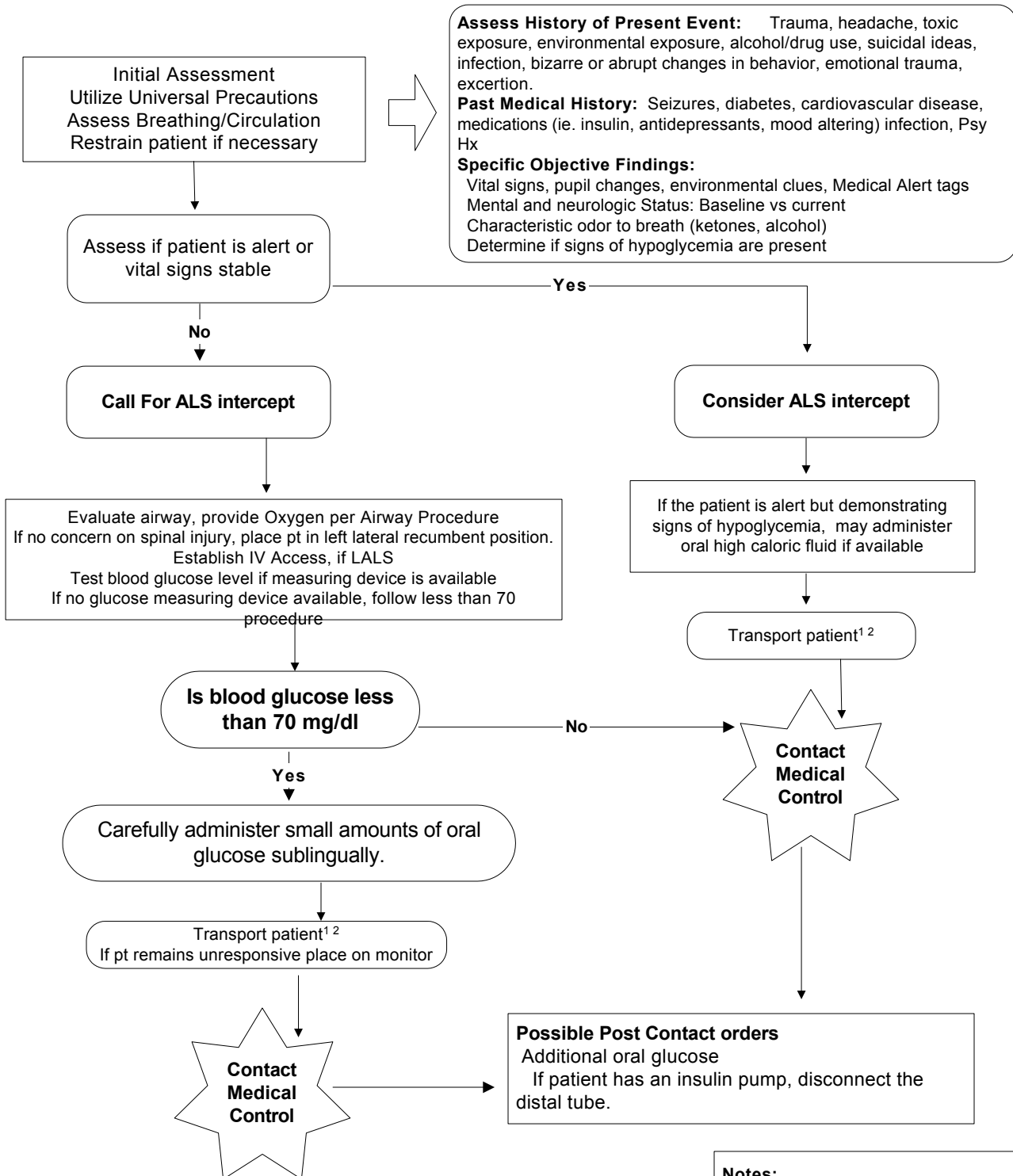
Marquette County EMS Medical Control Authority

Part 1 Section 1

BLS LALS

Protocol Protocol

Altered Mental Status Protocol



Authentication And Approval:

 Marquette County EMS Medical Director Date:
 Effective Date: 10/19/89; Revision Date: 12/18/98, 1/7/03

Notes:

1. If patient refuses transport obtain post treatment blood glucose level prior to leaving patient.
2. Instruct pt on need to get food in system on any pt not transported, due to short action of dextrose.