

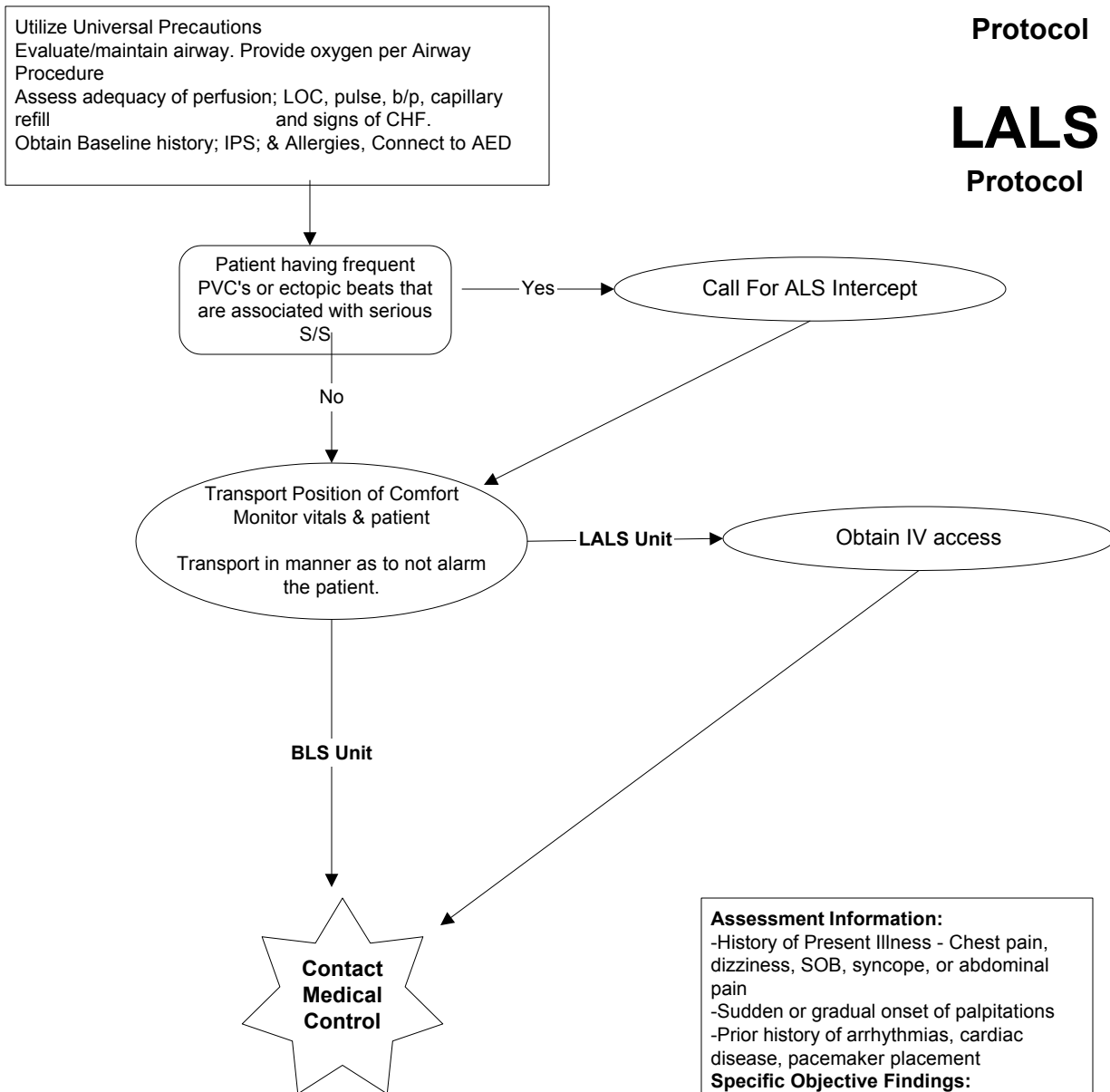
Marquette County EMS Medical Control Authority

Part 1 Section 1

Cardiac Problems - Ventricular Ectopy

BLS
Protocol

LALS
Protocol



Special Considerations:
a. Always consider hypoxia as a potential source of ectopy
b. Elderly patients frequently experience asymptomatic PVC's

Assessment Information:
-History of Present Illness - Chest pain, dizziness, SOB, syncope, or abdominal pain
-Sudden or gradual onset of palpitations
-Prior history of arrhythmias, cardiac disease, pacemaker placement
Specific Objective Findings:
-Vital signs
-EKG findings
rate, regularity
P wave relationship to QRS
Ectopic beats: wide or narrow

Authentication And Approval:

Marquette County EMS Medical Director Date:

Effective Date: 10/19/89; Revision Date: 5/5/98