

Marquette County EMS Medical Control Authority

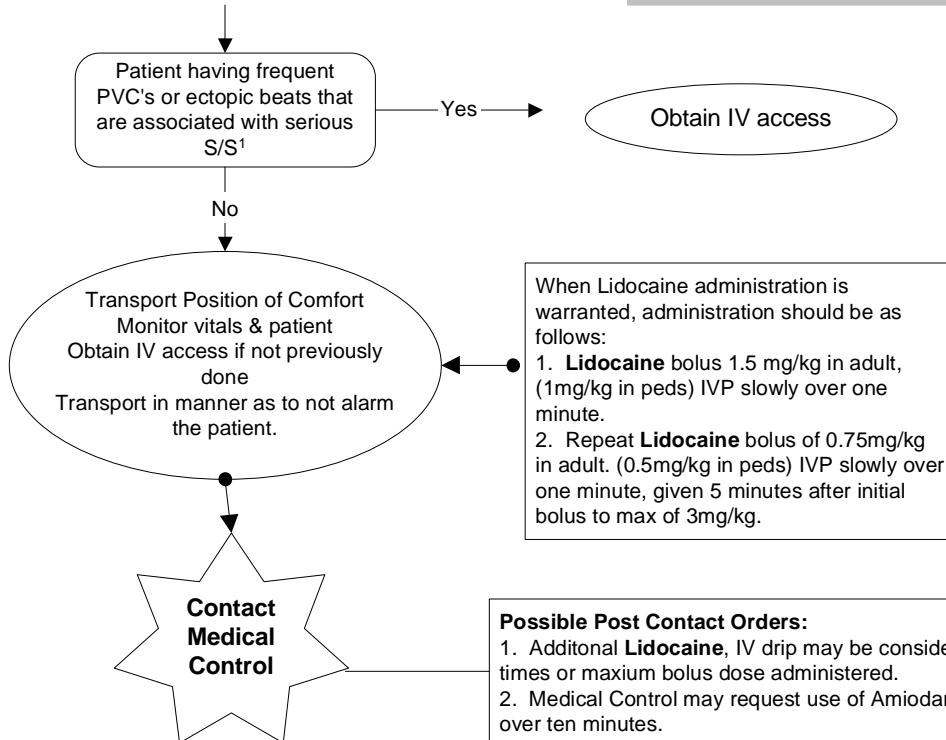
Part 1 Section 1

Cardiac Problems - Ventricular Ectopy

ALS Protocol

Utilize Universal Precautions
Evaluate/maintain airway. Provide oxygen per Airway Procedure
Assess adequacy of perfusion; LOC, pulse, b/p, capillary refill and signs of CHF.
Obtain Baseline history; IPS; & Allergies, Connect to cardiac monitor; obtain 12-lead EKG as appropriate.

Special Note: If the underlying rhythm is a heart block, bradycardia, atrial fib or if the patient is asymptomatic with ectopy, you **must CONTACT MEDICAL CONTROL before** giving the patient Lidocaine.



Notes:

1. Serious S/S. If ectopic beats are ventricular (wide) and there are associated symptoms such as chest pain, dizziness, SOB, fainting, abdominal pain, sudden or gradual onset of palpitations, proceed with Lidocaine administration as noted.

Special Considerations:

- a. Always consider hypoxia as a potential source of ectopy
- b. Elderly patients frequently experience asymptomatic PVC's

Assessment Information:

-History of Present Illness - Chest pain, dizziness, SOB, syncope, or abdominal pain
-Sudden or gradual onset of palpitations
-Prior history of arrhythmias, cardiac disease, pacemaker placement
Specific Objective Findings:
-Vital signs
-EKG findings
rate, regularity
P wave relationship to QRS
Ectopic beats: wide or narrow

Authentication And Approval:

Marquette County EMS Medical Director

Date:

Effective Date: 10/19/89; Revision Date: 5/5/98; 1/3/06