

Marquette County EMS Medical Control Authority

Part 1 Section 1

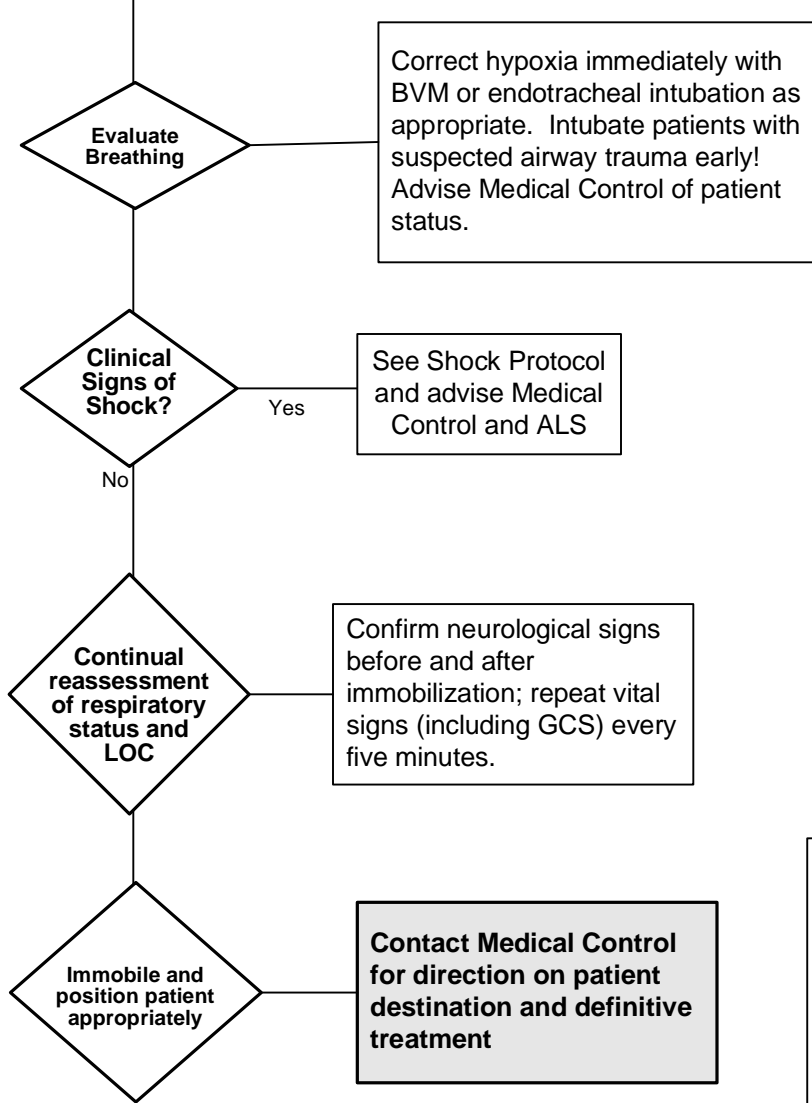
TRAUMA - Neck and Spine Injuries

LALS/ ALS Protocol



- Document:**
- ABCs
 - Detailed Assessment
 - Vital Signs (q. 5 mins)
 - SpO2
 - Glasgow Coma Scale
 - Motor Function
 - Neurologic Deficits
 - Lung Sounds
 - Skin Color
 - Treatment
 - Response to Treatment
 - Communication with Medical Control

ABC's
100% Oxygen
Evaluate airway while maintaining c-spine stabilization and complete General Trauma evaluation
Follow BLS Neck & Spine Injuries Protocol



- Indications for Cervical Spine Precautions:**
1. Any blunt trauma
 2. Unconscious patient
 3. Multiple trauma
 4. High speed crash
 5. Neck pain
 6. Ejected from vehicle
- Immobilize trunk of body first. Use appropriate devices to secure head (i.e. commercial head blocks, towel rolls, tape, etc.), in addition to the cervical collar.
- *Remove helmet using appropriate technique, unless contraindicated.

- Evaluation of cervical spine injuries to include:**
1. Presence of significant mechanism.
 2. Altered mental status or intoxication.
 3. Complaint of neck pain or neurologic symptoms.
 4. Distracting injury which could mask neck pain.
- Advise on-line medical control of above factors.
- See Spinal Immobilization Procedure (Part 1, Section 2).

Authentication And Approval :

Richard J. Fracare, DO _____ 3/1/2005
 Marquette County EMS Medical Director Date:
 Effective Date: 10/19/89 Revision Date: 6/24/97, 06/29/04

**Trauma-Neck
and Spine/
LALS-ALS**