

Marquette County EMS Medical Control Authority

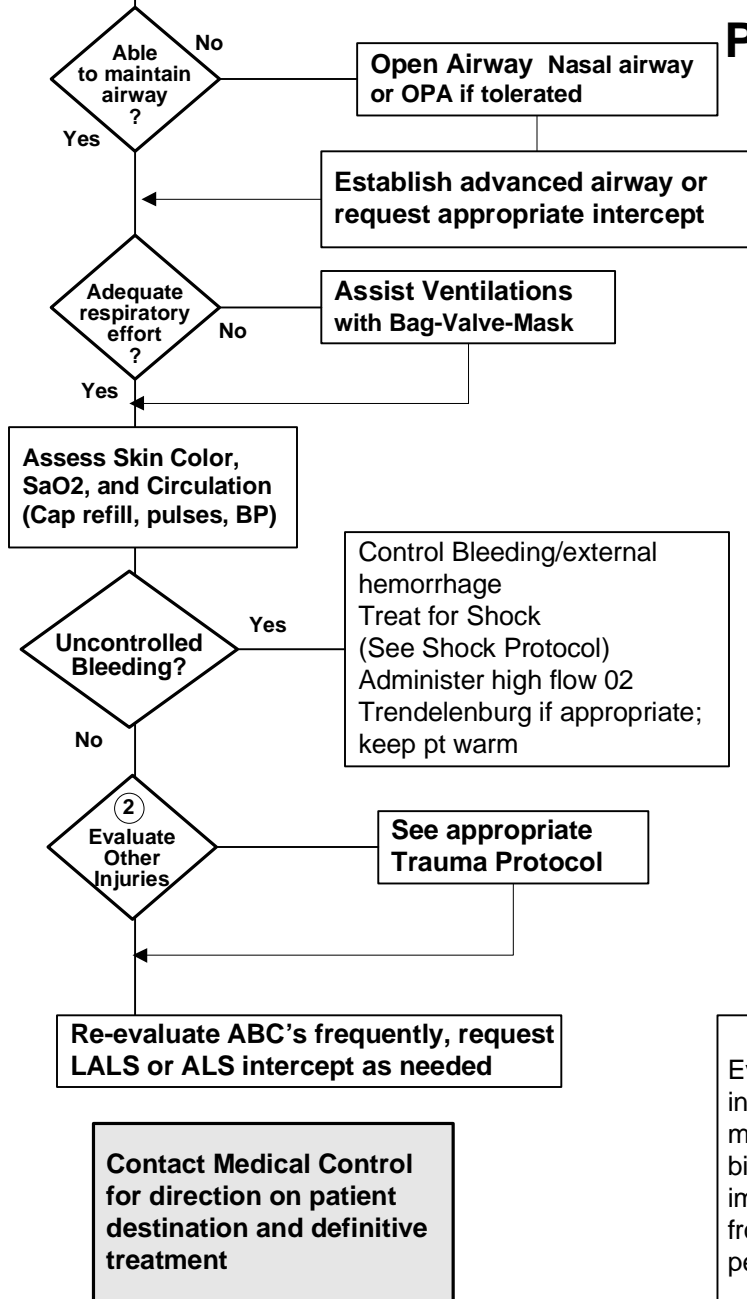
Part 1 Section 1

TRAUMA - General

BLS LALS ALS Protocol

- Document:**
- ABCs
 - Detailed Assessment
 - Vital Signs
 - SpO2
 - Glasgow Coma Scale
 - Motor Function
 - Neurologic Deficits
 - Lung Sounds
 - Skin Color
 - Treatment
 - Response to Treatment
 - Communication with Medical Control

- ABCs
- Oxygen 100%
- Transport ASAP
- Prior medical history ①



Glasgow Coma Scale

Eye Opening	Spontaneous	4
	To Voice	3
	To Pain	2
	None	1
Best Verbal Response	Oriented	5
	Confused	4
	Inappropriate words	3
	Incomprehensible words	2
	None	1
Best Motor Response	Obeys Commands	6
	Localizes Pain	5
	Withdraws (Pain)	4
	Flexion	3
	Extension	2
	None	1

- ①
- Age <5 or >55 years
 - Cardiac or Respiratory Disease
 - Insulin Dependent Diabetes, cirrhosis, or morbid obesity
 - Pregnancy
 - Immunosuppressed patient
 - Bleeding Disorder or on anti-coagulants

②
Evaluation of injuries: Ejection from a vehicle; death in same patient compartment; extrication >20 minutes; falls >20 feet; rollover accident; high speed; bicycle with rider thrown; bike/auto with >5 mph impact; motorcycle >20 mph with separation of bike from rider; pedestrian thrown or run over; auto vs pedestrian at > 5 mph impact.

Limit scene times to less than ten minutes for major trauma patients with uncomplicated extrication.

Initiate Code Trauma Guidance if indicated.

Authentication And Approval :

Richard L. Francini DO _____ 3/1/2005 _____
 Marquette County EMS Medical Director Date:
 Effective Date: 10/19/89 Revision Date: 6/24/97, 06/29/04