

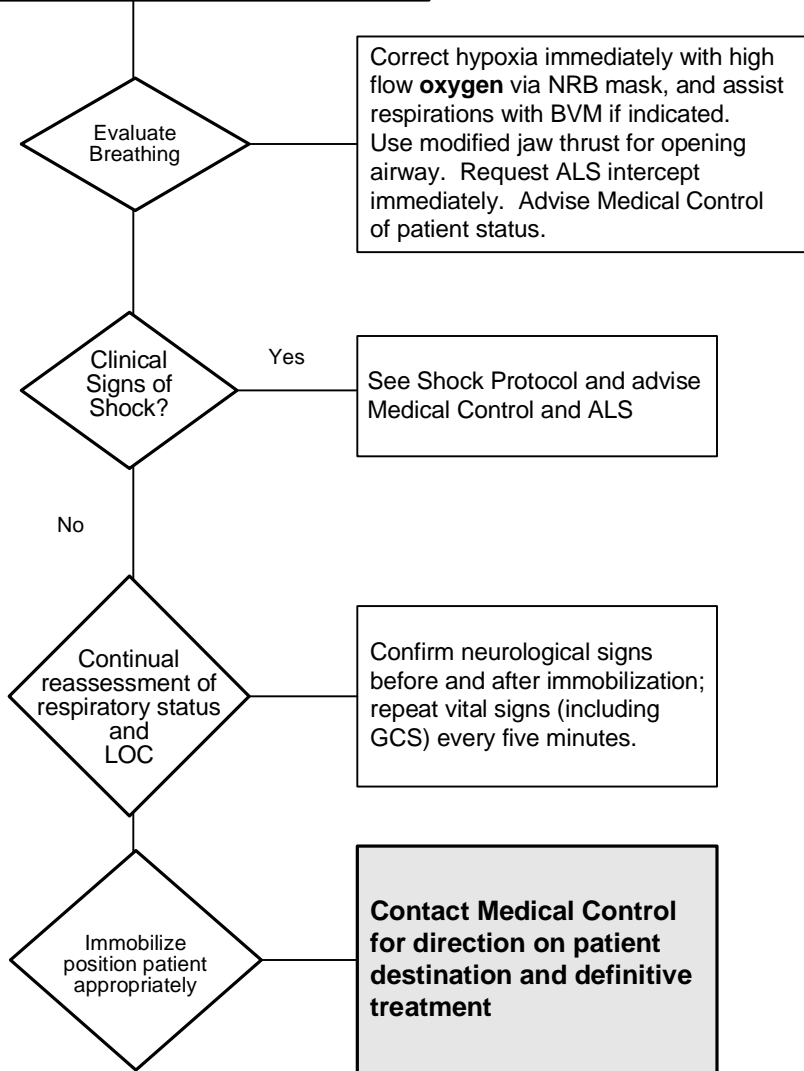
Marquette County EMS Medical Control Authority


Part 1 Section 1

TRAUMA - Neck and Spine

BLS Protocol

ABCDE
100% Oxygen
Evaluate airway while maintaining
c-spine stabilization and complete
General Trauma evaluation



Document: 

- ABCDE
- Detailed Assessment
- Vital Signs (q. 5 mins)
- SpO2
- Glasgow Coma Scale
- Motor Function
- Neurologic Deficits
- Lung Sounds
- Skin Color
- Treatment
- Response to Treatment
- Communication with Medical Control

Indications for Cervical Spine Precautions:

1. Any blunt trauma
2. Unconscious patient
3. Multiple trauma
4. High speed crash
5. Neck pain
6. Ejected from vehicle

Immobilize trunk of body first. Use appropriate devices to secure head (i.e. commercial head blocks, towel rolls, tape, etc.), in addition to the cervical collar.

*Remove helmet using appropriate technique, unless contraindicated.

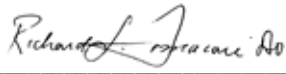
Evaluation of cervical spine injuries to include:

1. Presence of significant mechanism.
2. Altered mental status or intoxication.
3. Complaint of neck pain or neurologic symptoms.
4. Distracting injury which could mask neck pain.

Advise on-line medical control of above factors.

See Spinal Immobilization Procedure (Part 1, Section 2).

Authentication And Approval :

 5/5/2008

Marquette County EMS Medical Director Date:

Effective: 10/19/89 Rev.: 6/24/97, 06/29/04, 3/1/05, 5/5/08

Trauma
Neck & Spine
BLS