


# Marquette County EMS Medical Control Authority

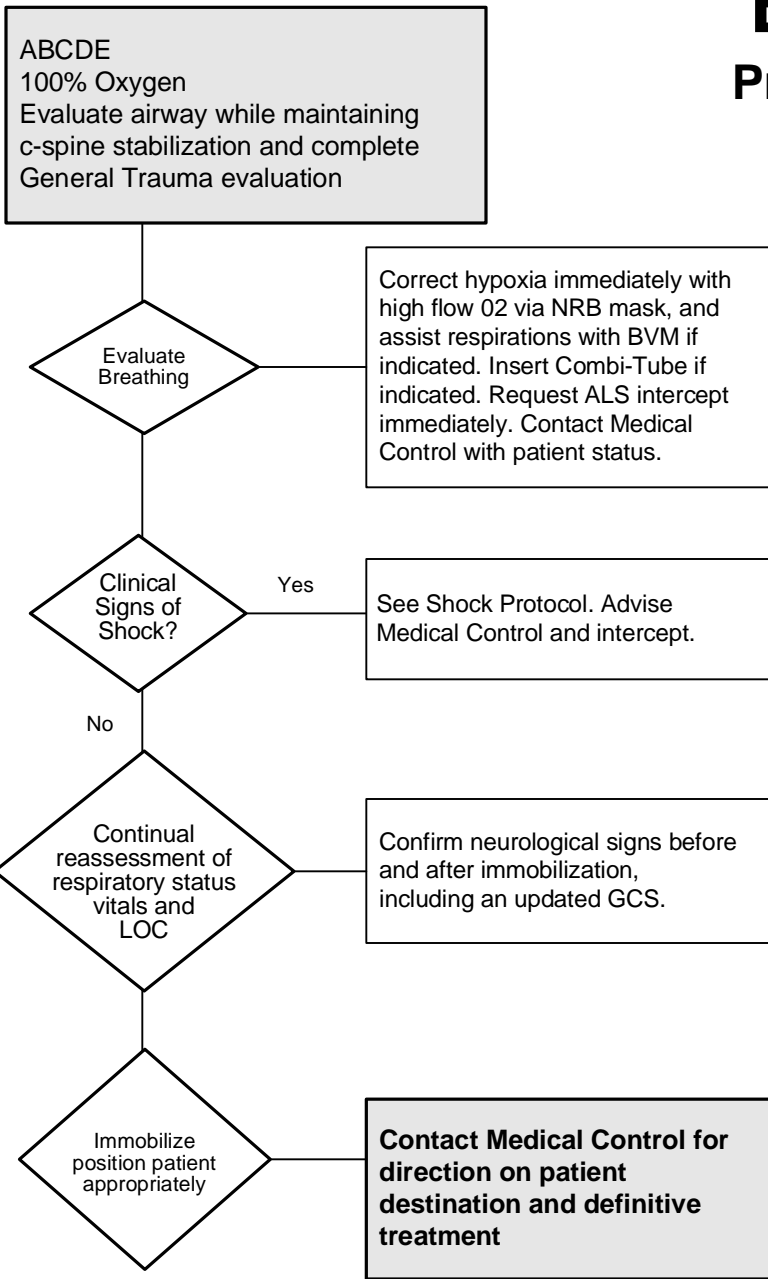
Part 1 Section 1

## TRAUMA - Head

# BLS Protocol

Document: 

- ABCDE
- Detailed Assessment
- Vital Signs
- SpO2
- Glasgow Coma Scale
- Motor Function
- Neurologic Deficits
- Lung Sounds
- Skin Color
- Treatment
- Response to Treatment
- Communication with Medical Control




Note: Head injured patients are not hypotensive unless there is blood loss somewhere in the body. Spine-injured patients can be in shock without showing classic signs.

Patient to be monitored for:

1. Aspiration
2. Pupil size, equality, and reactivity
3. Cerebral herniation
4. Extensor posturing
5. Unequal or unreactive pupils
6. Progressive neurologic deterioration
7. Decrease in GCS of  $\geq 2$  in patients with initial GCS  $< 9$

Glasgow Coma Scale		
<b>Eye</b>	Spontaneous	4
<b>Opening</b>	To Voice	3
	To Pain	2
	None	1
<b>Best Verbal Response</b>	Oriented	5
	Confused	4
	Inappropriate words	3
<b>Best Motor Response</b>	Incomprehensible words	2
	None	1
	Obeys Commands	6
<b>Best Motor Response</b>	Localizes Pain	5
	Withdraws (Pain)	4
	Flexion	3
	Extension	2
	None	1

Authentication And Approval :

 5/5/2008

Marquette County EMS Medical Director Date:

Effective: 10/19/89 Rev.: 6/24/97, 06/29/04, 3/1/05, 5/5/08