

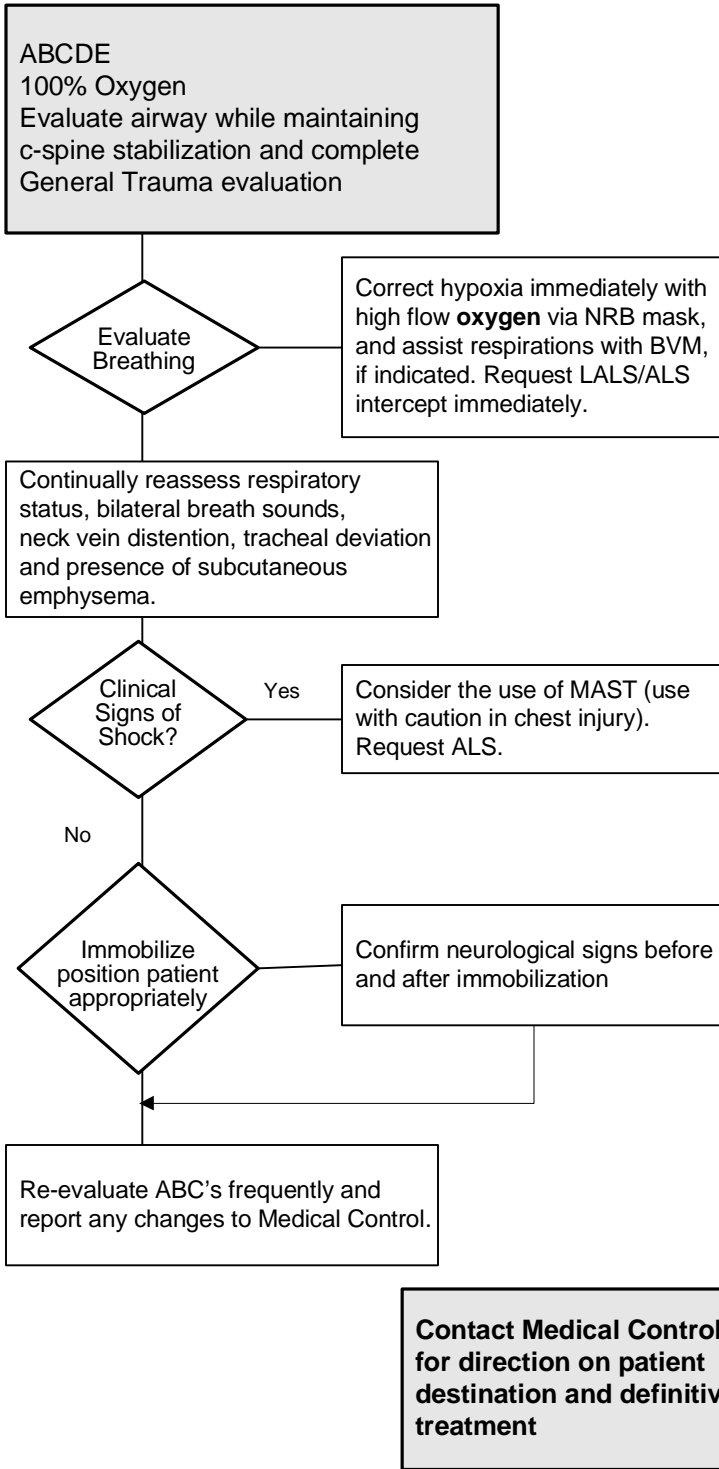
# Marquette County EMS Medical Control Authority

Part 1 Section 1

## TRAUMA - Chest

# BLS Protocol

- Document:
- ABCDE
  - Detailed Assessment
  - Vital Signs
  - SpO2
  - Glasgow Coma Scale
  - Motor Function
  - Neurologic Deficits
  - Lung Sounds
  - Skin Color
  - Treatment
  - Response to Treatment
  - Communication with Medical Control



- If evaluation reveals:
1. Simple rib fractures - position of comfort and transport.
  2. Flail chest - stabilize flail segment and assist respirations as necessary.
  3. Open Pneumothorax - seal with gloved hand, then semi-occlusive dressing on three sides.
  4. Tension Pneumothorax (open) - unseal dressed wound until pressurized air escapes, then reseal.
  5. Tension Pneumothorax (closed) - rapid packaging and transport to ALS intercept or hospital.
  6. Impaled Object - leave and secure in place.
  7. Note: Tension pneumothorax, hemothorax, myocardial contusion, cardiac tamponade - Rapid transport.

Glasgow Coma Scale		
Eye Opening	Spontaneous	4
	To Voice	3
	To Pain	2
Best Verbal Response	None	1
	Oriented	5
	Confused	4
Best Motor Response	Inappropriate words	3
	Incomprehensible words	2
	None	1
Best Motor Response	Obeys Commands	6
	Localizes Pain	5
	Withdraws (Pain)	4
Best Motor Response	Flexion	3
	Extension	2
	None	1

Authentication And Approval :

*Richard L. Jarama, DO* 5/5/2008

---

Marquette County EMS Medical Director Date:

Effective: 10/19/89 Rev.: 6/24/97, 06/29/04, 3/1/05, 5/5/08