

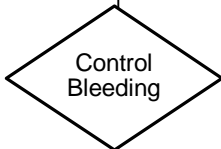
# Marquette County EMS Medical Control Authority

Part 1 Section 1

## TRAUMA - Abdominal Injuries

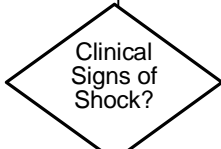
## BLS Protocol

ABCDE  
100% Oxygen  
Evaluate airway while maintaining c-spine stabilization and complete General Trauma evaluation



Cover eviscerated bowel with sterile, moist dressing. Stabilize impaled objects prior to moving. Contact Medical Control to advise of patient status.

Seal abdominal puncture wounds to maintain chest cavity integrity




Yes  
Follow Shock Protocol (Part 1, Section 1). Consider the use of MAST. Request appropriate intercept as needed

No



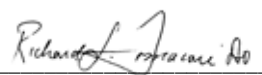
Confirm neurological signs before and after immobilization

Re-evaluate frequently, request LALS or ALS intercept as needed

- Document: 
- ABCDE
  - Detailed Assessment
  - Vital Signs
  - SpO2
  - Glasgow Coma Scale
  - Motor Function
  - Neurologic Deficits
  - Lung Sounds
  - Skin Color
  - Treatment
  - Response to Treatment
  - Communication with Medical Control

Glasgow Coma Scale		
<b>Eye Opening</b>	Spontaneous	4
	To Voice	3
	To Pain	2
<b>Best Verbal Response</b>	None	1
	Oriented	5
	Confused	4
<b>Best Motor Response</b>	Inappropriate words	3
	Incomprehensible words	2
	None	1
<b>Best Motor Response</b>	Obeys Commands	6
	Localizes Pain	5
	Withdraws (Pain)	4
<b>Best Motor Response</b>	Flexion	3
	Extension	2
	None	1

**Contact Medical Control for direction on patient destination and definitive treatment**

Authentication And Approval :  
  
 Marquette County EMS Medical Director  
 Effective: 10/19/89 Rev.: 6/24/97, 06/29/04, 3/1/05, 5/5/08  
 Date: 5/5/2008