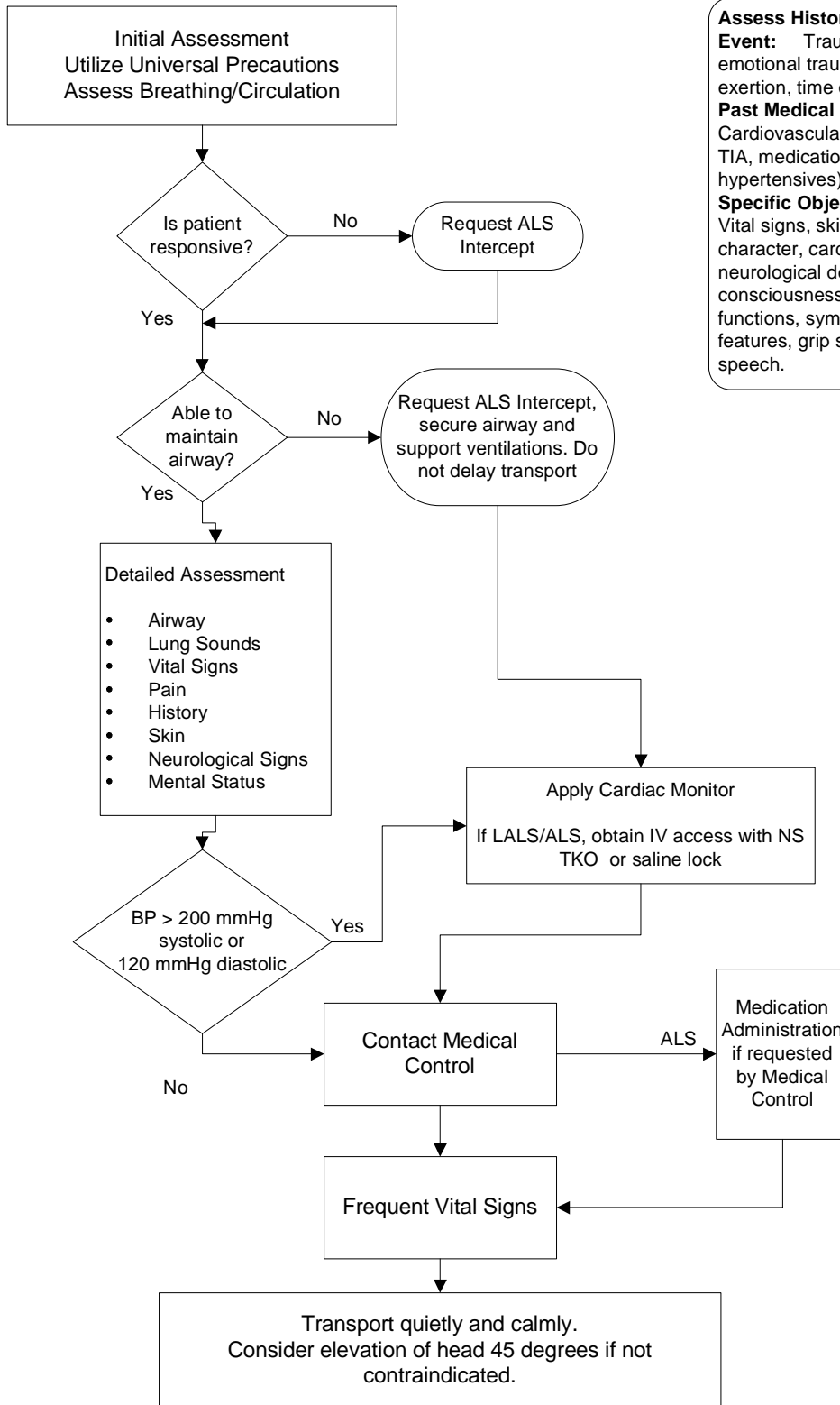


Marquette County EMS Medical Control Authority

Part 1 Section 1

Hypertensive Emergencies



Assess History of Present Event: Trauma, headache, emotional trauma, physical exertion, time of onset.
Past Medical History: Cardiovascular disease, CVA, TIA, medications (ie. Anti-hypertensives).
Specific Objective Findings: Vital signs, skin, pulse character, cardiac rhythm, neurological deficits, level of consciousness, motor functions, symmetrical facial features, grip strength, clear speech.

BLS
Protocol
LALS
Protocol
ALS
Protocol

- Document:**
- ABCs
 - Detailed Assessment
 - Vital Signs
 - SpO2
 - Glasgow Coma Scale
 - Motor Function
 - Neurologic Deficits
 - Lung Sounds
 - Skin Color
 - Treatment
 - Response to Treatment
 - Communication with Medical Control

9/10/2002
 Date: 9/10/02
 Marquette County EMS Medical Director
 Effective Date: 10/19/89; Revision Date: 12/18/98, 9/10/02

Authentication And Approval:

Richard J. Johnson, MD