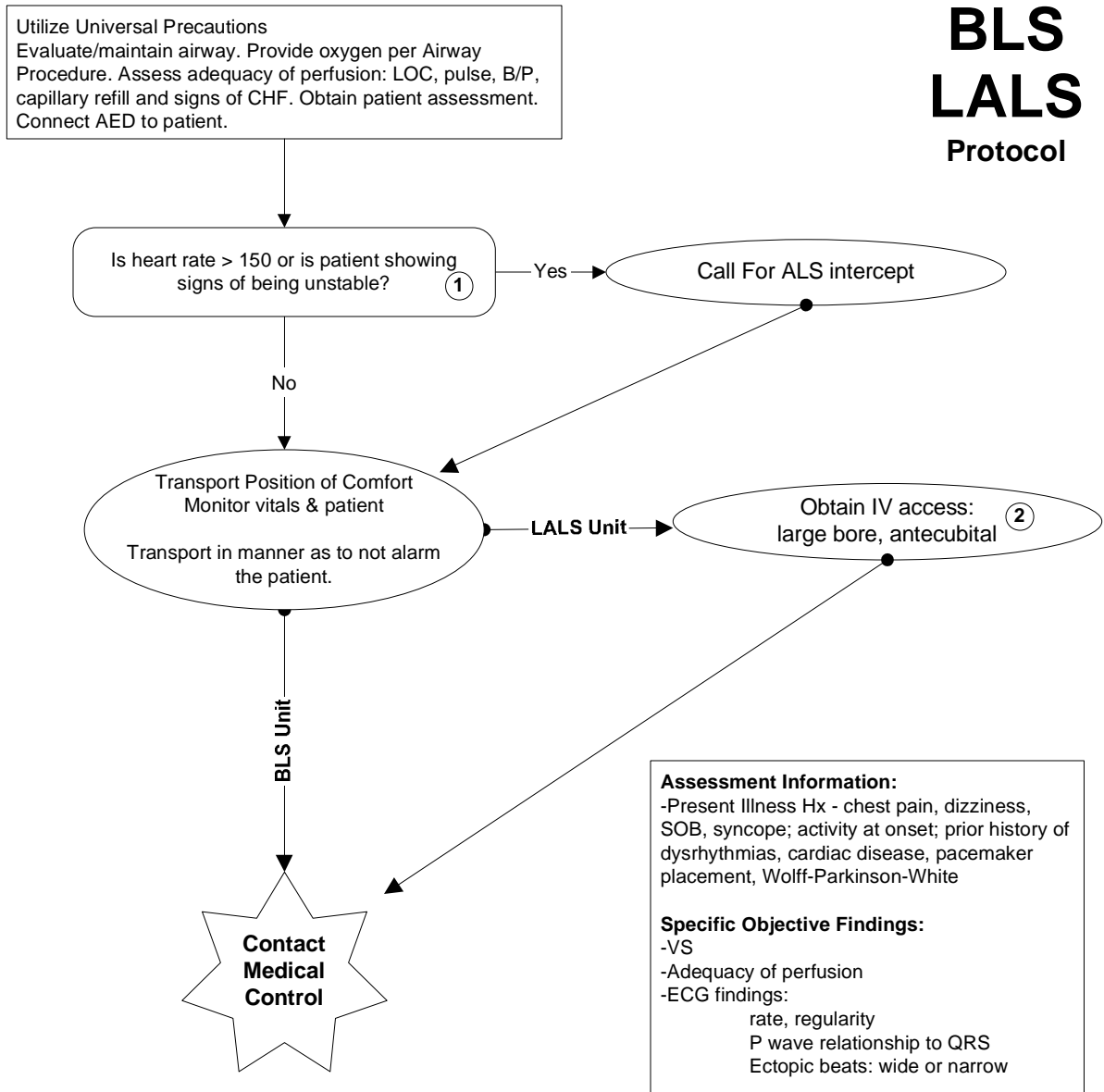


Marquette County EMS Medical Control Authority

Part 1 Section 1

Cardiac Problems - SupraVentricular Tachycardia

BLS
LALS
Protocol



1 Unstable condition must be related to the tachycardia. S/S may include chest pain, SOB, decreased LOC, low B/P, pulmonary congestion, CHF, or AMI.
2 IV Access should be antecubital to allow for rapid movement into circulatory system.

Authentication And Approval:

5/30/2008

Marquette County EMS Medical Director

Date:

Effective Date: 10/19/89; Revision Date: 5/5/98; 5/30/08