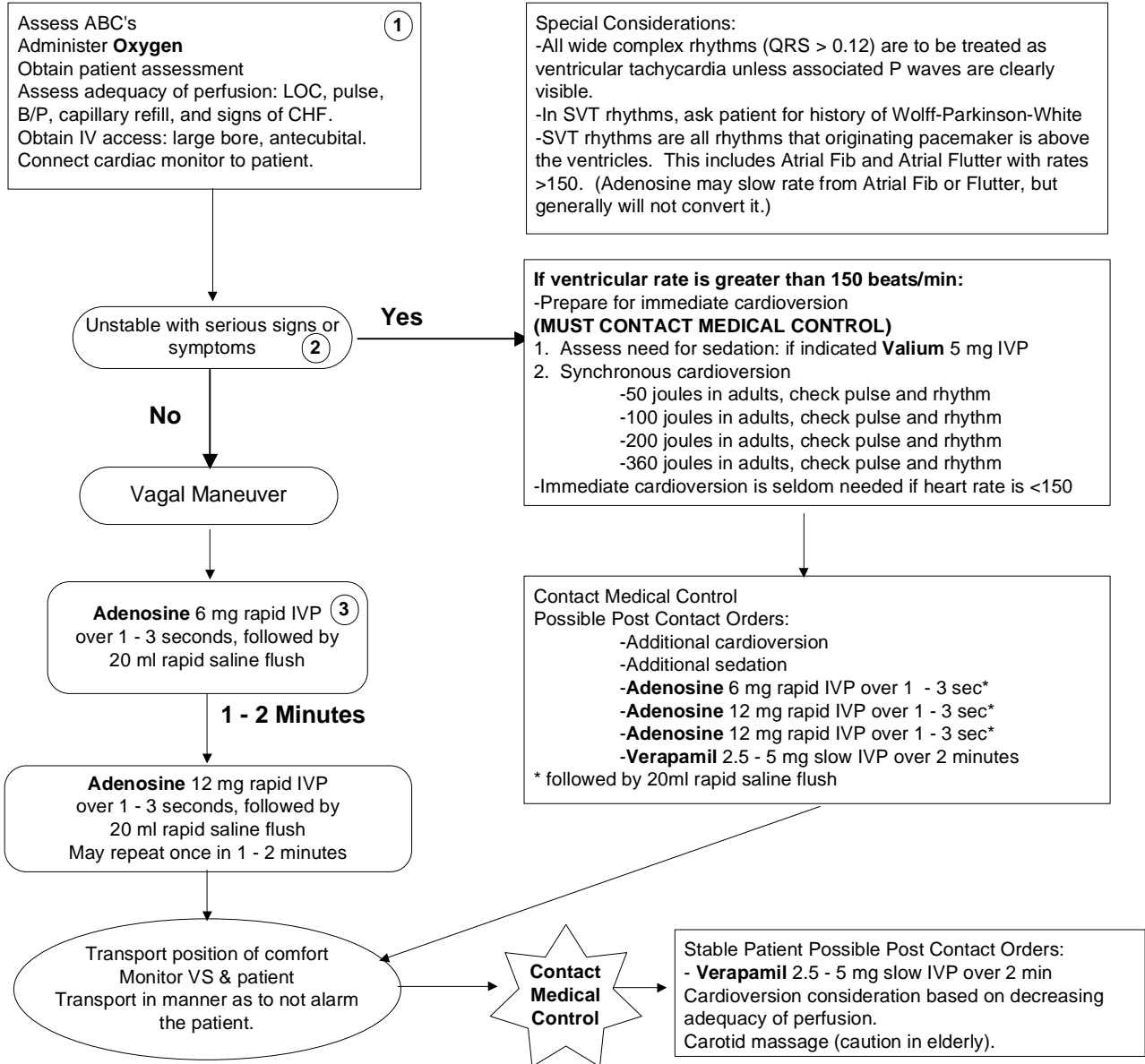


Marquette County EMS Medical Control Authority

Part 1 Section 1

Cardiac Problems - SupraVentricular Tachycardia **ALS** Protocol



1 IV access should be large bore, antecubital to allow for rapid movement into circulatory system. It is ideal to have IV access prior to cardioversion. But an unstable pt may need IV deferred in favor of cardioversion.

2 Unstable condition must be related to the tachycardia. S/S may include chest pain, SOB, decreased LOC, low B/P, pulmonary congestion, CHF, or AMI.

3 If underlying rhythm is atrial fib with rapid ventricular response then **Verapamil** should be considered in place of **Adenosine** doses with Medical Control contact.

Authentication And Approval:

Richard L. Johnson, MD

5/30/2008

Marquette County EMS Medical Director

Date

Effective Date: 10/19/89; Revision Date: 5/5/98; 5/30/08