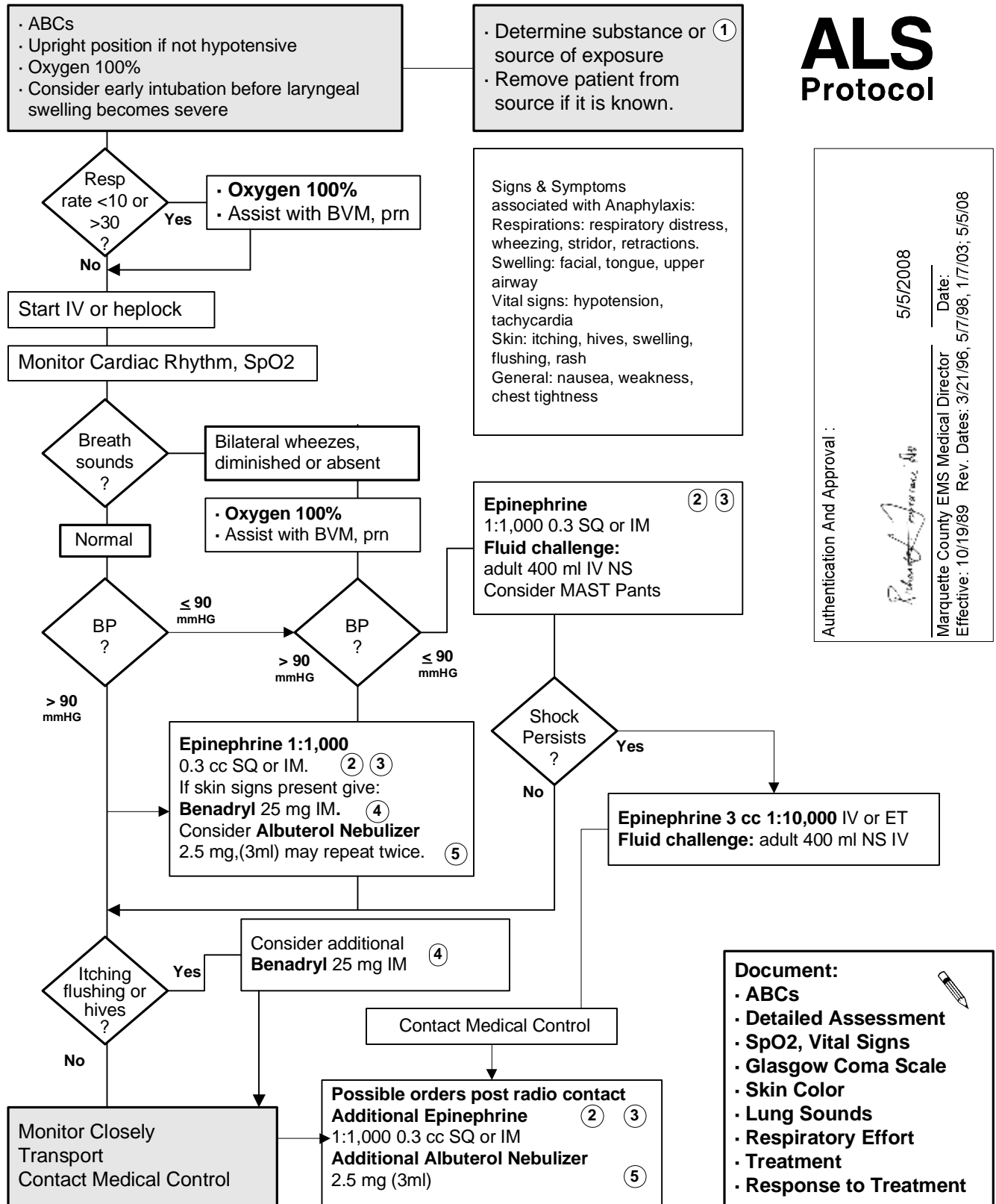


# Marquette County EMS Medical Control Authority

## Anaphylaxis and Allergic Reaction Protocol

Part 1 Section 1

# ALS Protocol



1 Bee sting: gently remove stinger if still present.

2 Two (2) dilutions of epinephrine are available: 1:1,000 is appropriate for SQ, IM, or SL injections, 1:10,000 is for IV or ET use. Be sure to give the appropriate dilution.

3 Epinephrine: pediatric dose = see pediatric protocols.

4 Benadryl (Diphenhydramine): pediatric dose = see pediatric protocols.

5 Albuterol: pediatric dose = see pediatric protocols.