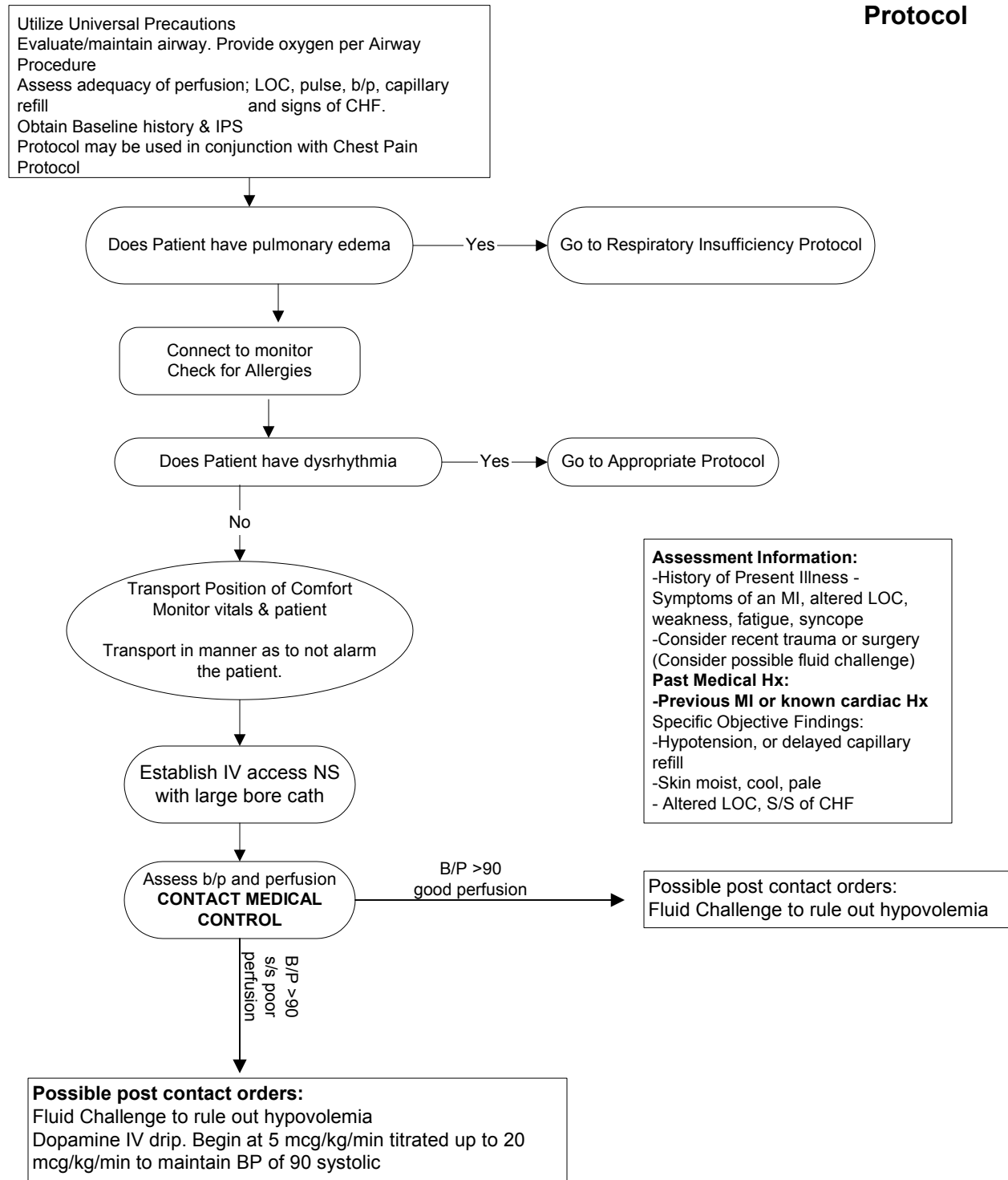


# Marquette County EMS Medical Control Authority

Part 1 Section 1

## Cardiac Problems - Cardiogenic Shock

### ALS Protocol



Authentication And Approval:

\_\_\_\_\_  
Marquette County EMS Medical Director  
Effective Date: 10/19/89; Revision Date: 5/5/98

\_\_\_\_\_  
Date: