

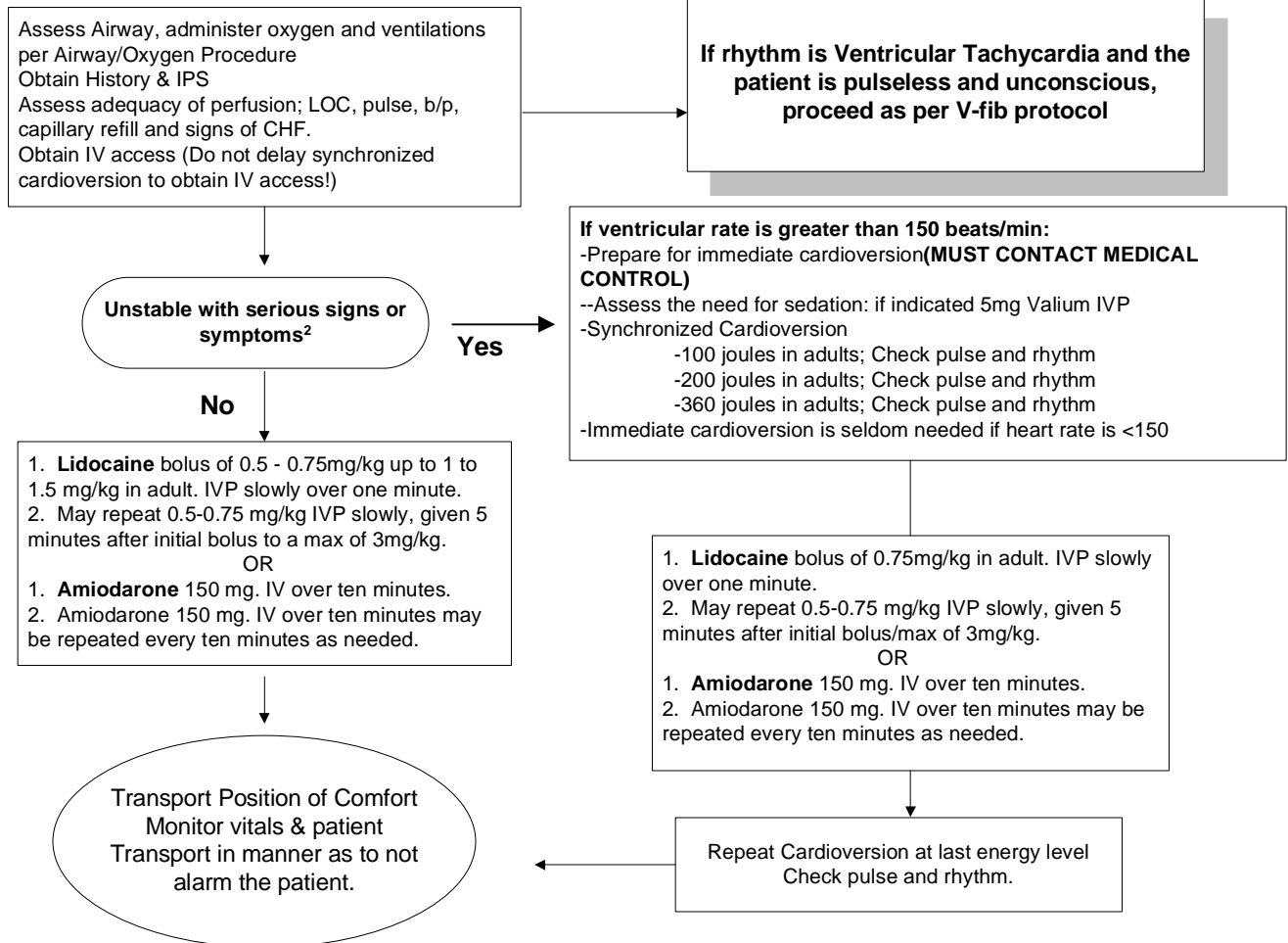
# Marquette County EMS Medical Control Authority

Part 1 Section 1

## Cardiac Problems - Ventricular Tachycardia

# ALS Protocol

This Protocol may be used in conjunction with the Cardiac Arrest Protocol



### Notes:

1. At any time during treatment that the pt converts to another rhythm; initiate Lidocaine or Amiodarone IVP initial bolus followed by IV drip and repeat bolus as listed above on left side of protocol. Base administration on what has been given prior to conversion. Start IV drip based on drug which converted pt.
2. Unstable condition may be related to the tachycardia. S/S may include chest pain, SOB, decreased LOC, low b/p, pulmonary congestion, CHF, or AMI.

### CONTACT MEDICAL CONTROL:

- Possible Post Contact Orders:
- Sedation 5 mg Valium IVP
  - Cardioversion 100/200/360 Joules

Authentication And Approval:

Marquette County EMS Medical Director

Date

Effective Date: 10/19/89; Revision Date: 5/5/98, 1/03/06