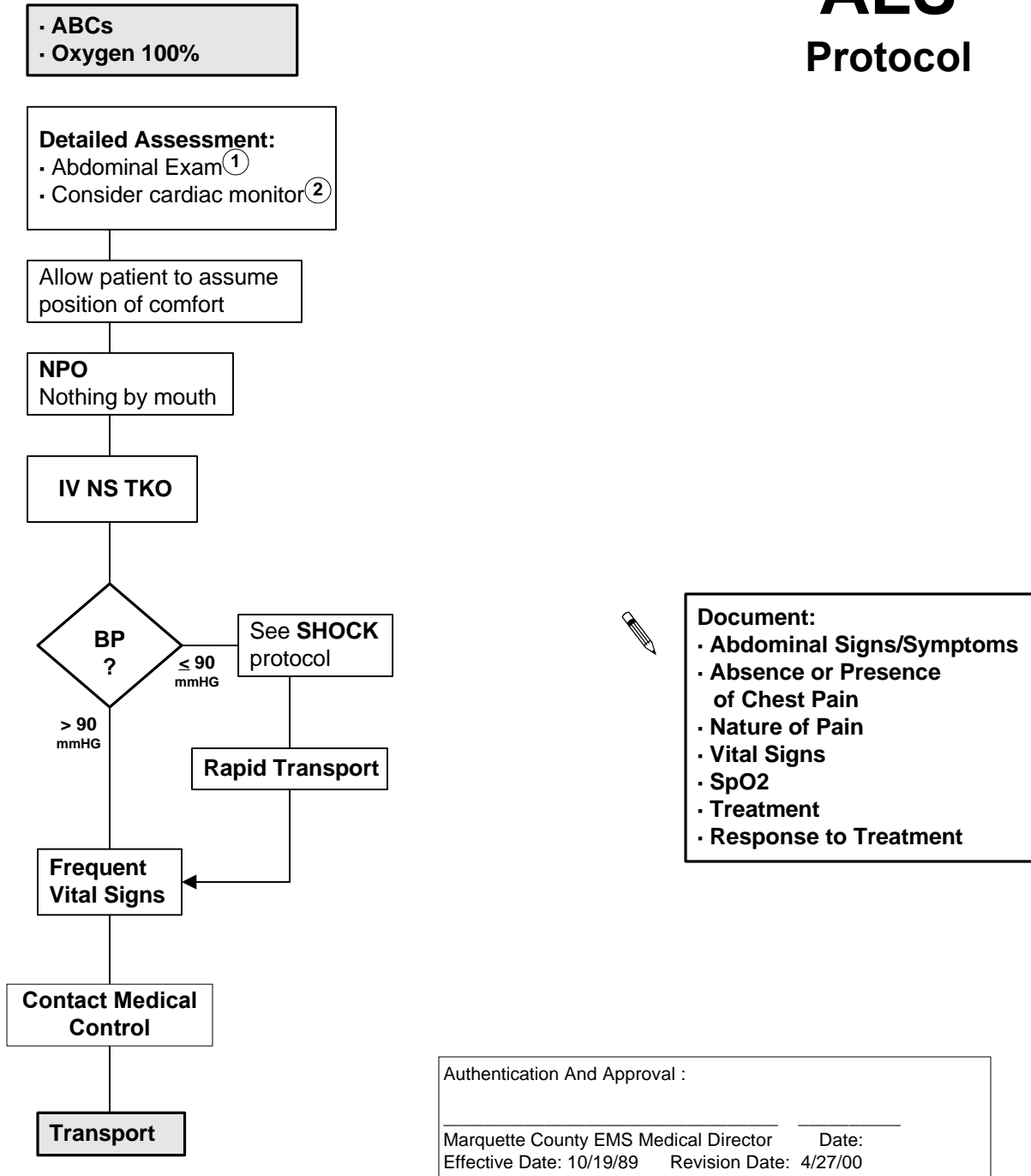


Marquette County EMS Medical Control Authority

Part 1 Section 1

Abdominal Pain: Not related to pregnancy or trauma

ALS Protocol



1 Abdominal Exam: Note pain (nature, duration, intensity on 1-10 scale, radiation).

Observe for palpable mass, always palpate with care. Note associated signs & symptoms; (nausea, vomiting, guarding, distention). **History:** previous episodes, last meal, current medications, last menstrual period, possibility of pregnancy.

2 Be aware that ischemic cardiac pain can present as abdominal pain especially in older patients. If cardiac pain is suspected monitor EKG.

If pulse is irregular monitor EKG on patient.