

Procedure: Installing or Updating to MagicWeb V50 on your PC. 07/11/2007

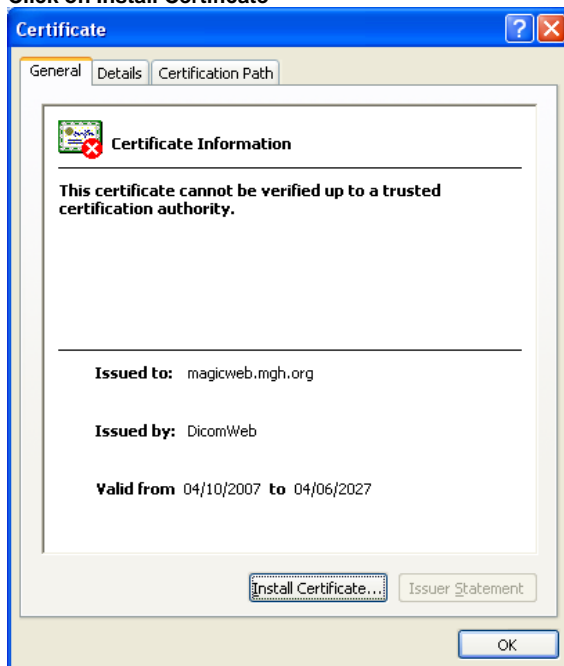
Minimum hardware and software requirements for MagicWeb V50 Viewer PCs:

- **Operating System and Software**
Microsoft Windows 2000
Microsoft Windows XP
Microsoft Internet Explorer 6.0 (Security Settings: Medium)
- **Computer/Processor**
Intel Pentium III with at least 500 MHz (Intel Pentium IV, 2 GHz recommended)
- **RAM**
256 MB (1GB recommended for 3D)
If you run clients on PCs with only 128 MB RAM the performance might not meet your expectations.
- **Hard Disk**
At least 2 GB free hard disk space
- **Graphics Card**
Resolution of at least 1024 x 768 pixels, true color

1. Go to your Internet Explorer ICON and type in the **URL: magicweb.mgh.org/magicweb**.
2. Once the program has installed to the log in screen later in this procedure, you may need to **make a short cut on your desktop for MagicWeb (go to File > Send > Shortcut to Desktop)**
3. If you presently have a MagicWeb ICON, you can right click on the ICON..and check the properties. **If your current ICON's properties are magicweb.mgh.org/magicweb, this ICON should now point you to the new MagicWeb server.** If it does not say magicweb.mgh.org/magicweb, please delete the ICON and create a new one as described in step 1.
4. You will get the Security Alert below when you go to the MagicWeb link. **Click on Yes**



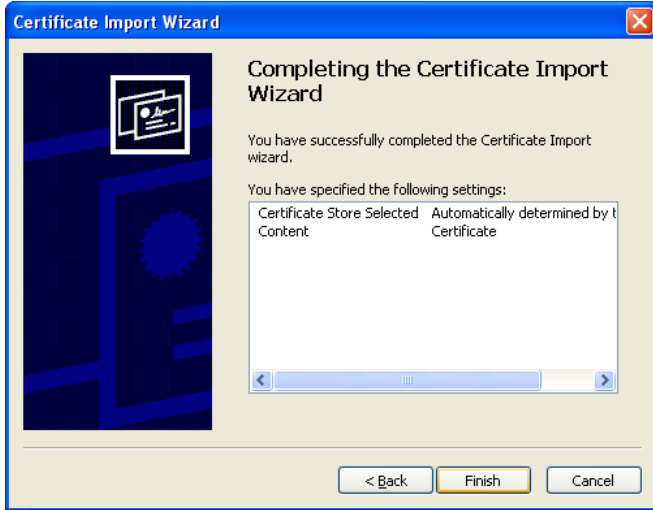
5. **Click on Install Certificate**



6. Click Next



7. Click Finish



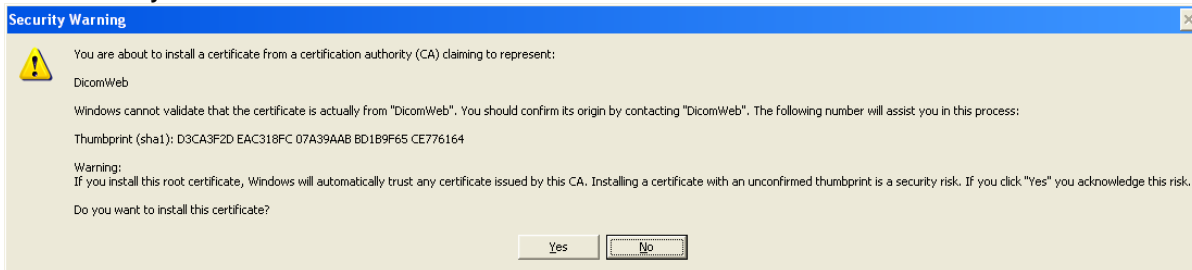
8. You should see that your import was successful



9. Click Yes that you want to add the certificates now and trust the Web site.



10. Click Yes that you want to install this certificate



11. After the certificate install, it will bring you to the log in screen.

If you have one monitor, make sure that you select Client Type: Advanced

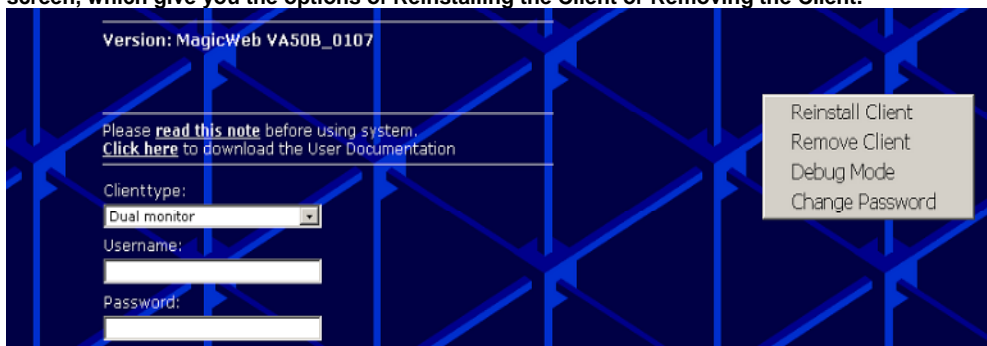


If you have dual monitors select a Client Type: Dual Monitor



12. Remember to make your shortcut to MagicWeb as described in step 2, if shortcut icon is not created automatically for you.

13. If you feel that you made a mistake installing the client or the program doesn't work correctly for you, you can right click on the log in screen, which give you the options of Reinstalling the Client or Removing the Client.



Hints for client installation

During installation the MagicWeb server is listed as a **Trusted Site**. To ensure that the MagicWeb ActiveX components can be installed on the client computer you must set the security level for **Trusted Sites** in the relevant network zone (intranet or internet) to **Medium** or **Low**. The security level **High** would prevent ActiveX components from running.

In order to change the security level for **Trusted sites**:

1. Open the **Internet Options** (menu **Tools > Internet Options**) dialog box in the Internet Explorer.
2. Click the Security tab card.
3. Click **Trusted Sites** and **Custom Level**
4. Check the settings for **Trusted Sites** and change them if necessary.
5. Also be sure to disable **Use PopUp Blocker**, if you are working with Windows XP, Service Pac 2 or higher.

In order to add a Trusted Site manually:

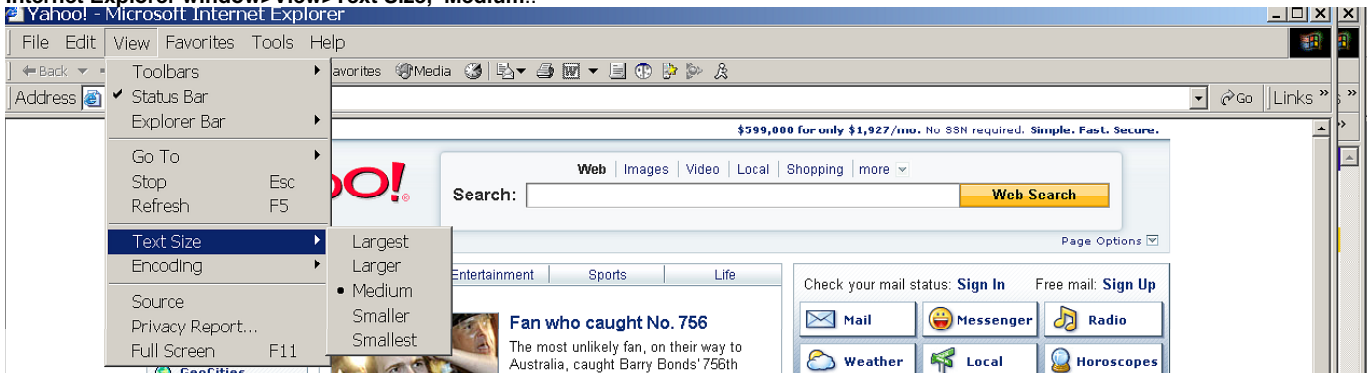
1. Enter the MagicWeb URL in the Internet Explorer address bar. **magicweb.mgh.org/magicweb**
2. Select and copy the URL (**CTRL + C**)
3. Open the **Internet Options** (menu **Tools > Internet Options**) dialog box in the Internet Explorer.
4. Click **Trusted Sites** and **Custom Level**
5. Paste the URL in the **Add this Web site to the zone box (Ctrl + V)**
6. Click **Add** and then close the dialog box with **OK**.

PC Setting for Viewing Images

To avoid having your MagicWeb Buttons cut off as shown below, please check your settings as described.



1. Internet Explorer Settings: To display the MagicWeb buttons correctly, the font in Internet Explorer should be set as follows:
Internet Explorer window>View>Text Size, Medium..



2. Monitor display font settings need to be small/normal for the dpi. To get to these settings, **Right Click on Desktop**, Select **Properties**, Go to the **Settings** Tab. You will see the dpi setting here, or you may have to click on a **Advanced** button to get to the dpi setting.

